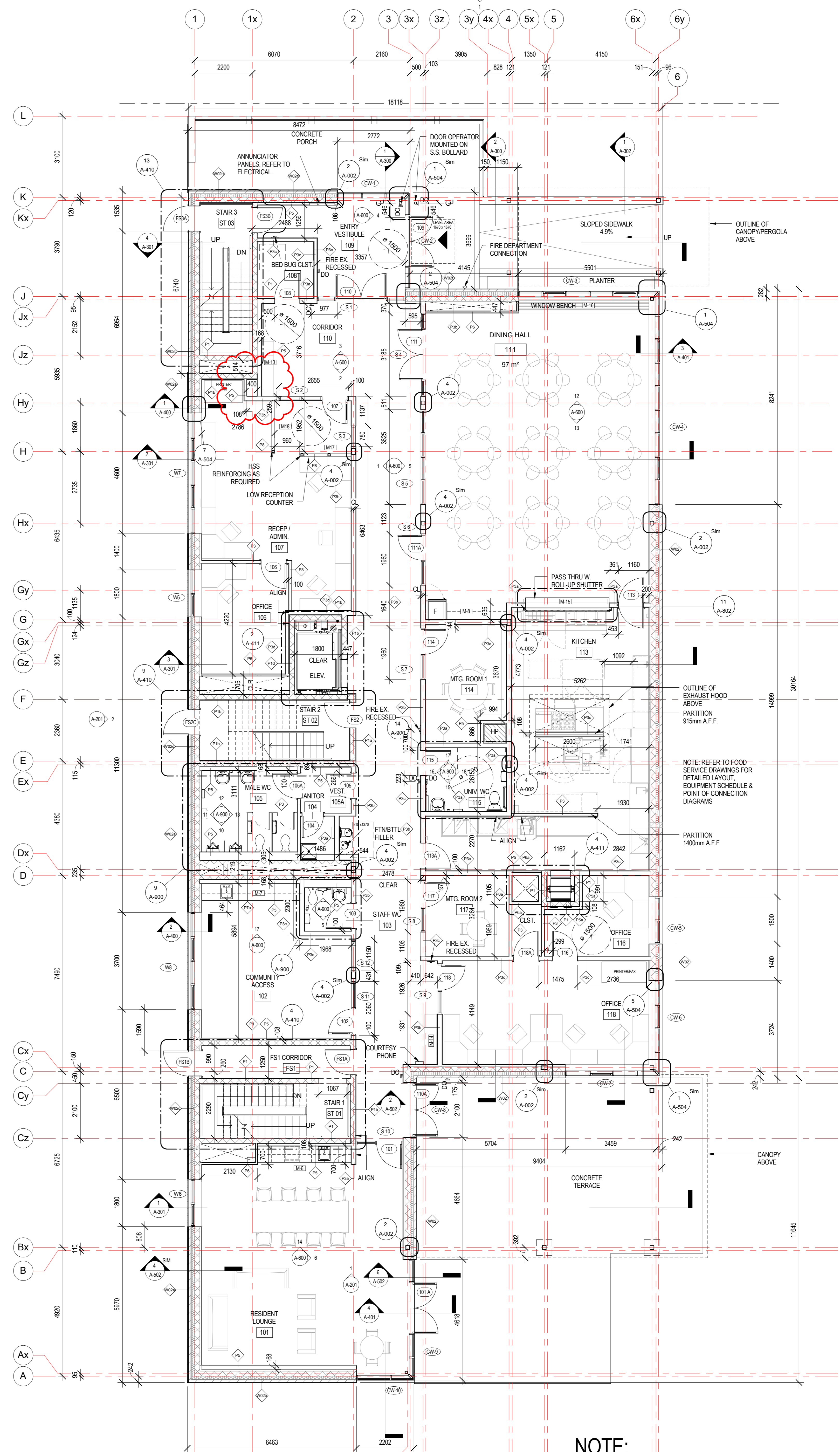


1 00 Basement
1:75



2 01 Ground Floor
1:75

NOTE:
REFER TO ELEVATIONS FOR CHANGE
IN EXTERIOR BRICK ASSEMBLY

ISSUED FOR TENDER

ISSUE DATE: MARCH 23, 2018

NO.	DATE	DESCRIPTION
8	2018/04/11	ISSUED FOR ADDENDUM #4
7	2018/04/04	ISSUED FOR ADDENDUM #2
6	2018/03/23	ISSUED FOR TENDER
5	2018/02/14	ISSUED FOR PERMIT REVISIONS R1
4	2017/12/19	ISSUED FOR BUILDING PERMIT
3	2017/03/22	ISSUED FOR COSTING
2	2017/01/16	ISSUED FOR COORDINATION
1	2016/12/02	ISSUED FOR COORDINATION

PROJECT:
**BROCK MISSION
MEN'S SHELTER**

217 MURRAY STREET, PETERBOROUGH, ONTARIO

DRAWING TITLE:
FLOOR PLANS

PROJECT NO: 14276 PROJECT NORTH
SCALE: 1:75
DRAWN BY: AJ
REVIEWED BY: JL

DRAWING NO:
A-101